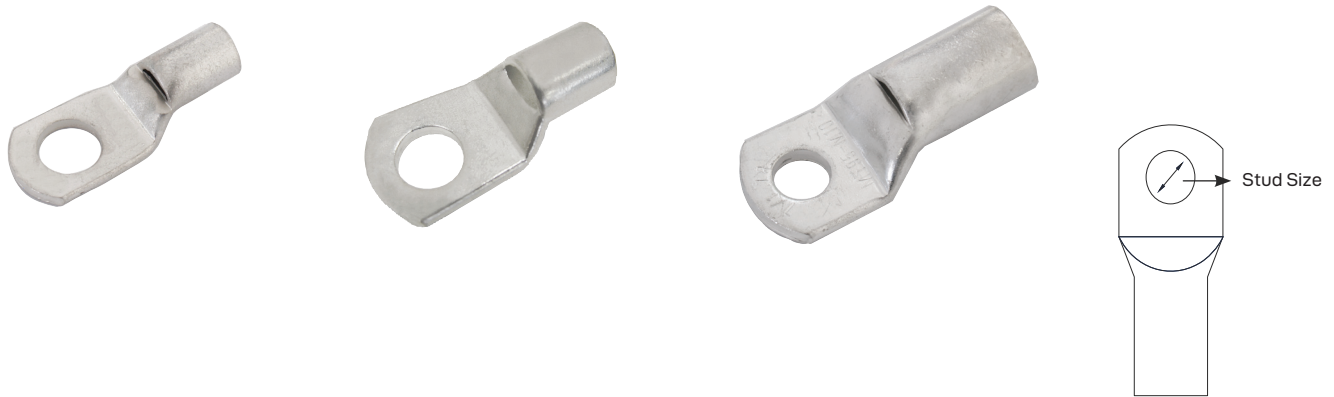


CABLE LUGS

- Straight rear entry opening
- Long barrel tubular cable lugs
- For flexible & stranded cables
- Electrolytic copper 99.95% purity
- Tin plated surface 5 - 10 microns
- Internal chamfer for easy cable insertion
- Operating temperature: -55°C to 155°C

BAG



PRODUCT INFORMATION

Part No.	Description	Industry Ref.	Cable Size	B & S Equivalent	Stud Size	Qty
LV4126	Cable lug - crimp style	8-5	8mm ²	8 B&S	5mm	10
LV4127	Cable lug - crimp style	8-8	8mm ²	8 B&S	8mm	10
LV4100	Cable lug - crimp style	10-6	10mm ²	8 B&S	6mm	10
LV4101	Cable lug - crimp style	10-8	10mm ²	8 B&S	8mm	10
LV4102	Cable lug - crimp style	10-10	10mm ²	8 B&S	10mm	10
LV4128	Cable lug - crimp style	14-6	14mm ²	6 B&S	6mm	10
LV4129	Cable lug - crimp style	14-8	14mm ²	6 B&S	8mm	10
LV4103	Cable lug	16-6	16mm ²	6 B&S	6mm	10
LV4104	Cable lug	16-8	16mm ²	6 B&S	8mm	10
LV4105	Cable lug	16-10	16mm ²	6 B&S	10mm	10
LV4106	Cable lug	25-6	25mm ²	3 B&S	6mm	10
LV4107	Cable lug	25-8	25mm ²	3 B&S	8mm	10
LV4108	Cable lug	25-10	25mm ²	3 B&S	10mm	10
LV4109	Cable lug	35-6	35mm ²	2 B&S	6mm	10
LV4110	Cable lug	35-8	35mm ²	2 B&S	8mm	10
LV4111	Cable lug	35-10	35mm ²	2 B&S	10mm	10
LV4112	Cable lug	50-8	50mm ²	0 B&S	8mm	10
LV4113	Cable lug	50-10	50mm ²	0 B&S	10mm	10
LV4114	Cable lug	50-12	50mm ²	0 B&S	12mm	10
LV4115	Cable lug	70-8	70mm ²	00 B&S	8mm	10
LV4116	Cable lug	70-10	70mm ²	00 B&S	10mm	10
LV4117	Cable lug	70-12	70mm ²	00 B&S	12mm	10
LV4118	Cable lug	95-10	95mm ²	000 B&S	10mm	10
LV4119	Cable lug	95-12	95mm ²	000 B&S	12mm	10