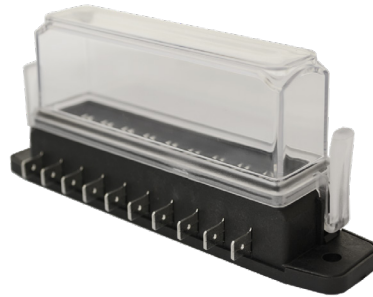


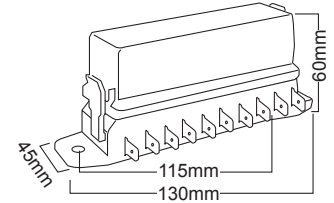
LV5447

10 WAY ATS STYLE CIRCUIT BREAKER BLOCK SUITS ATS CB'S; MINI, ATS & MICRO 2 FUSES

- Voltage: 6 - 32V
- Fuse/CB rating: 3 - 40A
- Housing material: Thermoplastic
- Tall weatherproof clear cover with rubber seal
- Terminal material: Tin plated
- Terminals: 6.3mm push-on
- Mounting hole: 5mm
- Wide surface area contacts
- Same footprint as LV5443



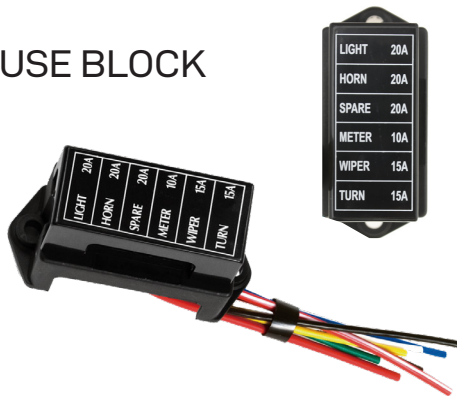
SINGLE PACK



LV5455

6 WAY PRE-WIRED ATS FUSE BLOCK WITH COVER

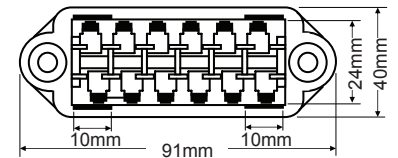
- Voltage: 6 - 32V
- Amperage: 15A/cct
- Housing material: Thermoplastic
- Terminal material: Tin plated brass
- Input cable size: 2.5mm²
- Output cable size: 1.5mm²
- Cable length:: 170mm
- Mounting hole: 5mm



LIGHT	20A
HORN	20A
SPARE	20A
METER	10A
WIPER	15A
TURN	15A



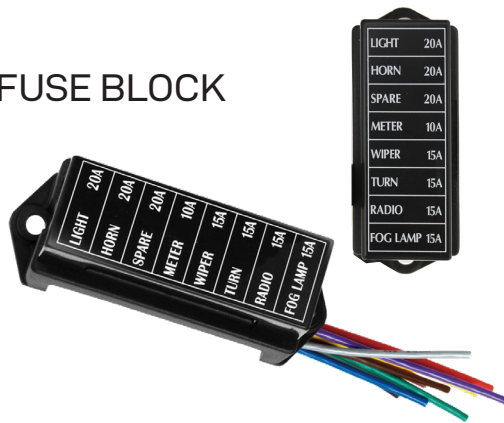
SINGLE PACK



LV5456

8 WAY PRE-WIRED ATS FUSE BLOCK WITH COVER

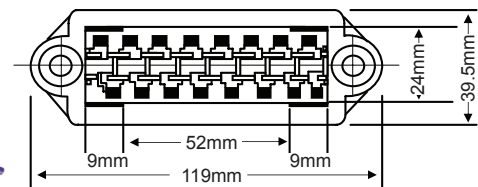
- Voltage: 6 - 32V
- Amperage: 15A/cct
- Housing material: Thermoplastic
- Terminal material: Tin plated brass
- Input cable size: 2.5mm²
- Output cable size: 1.5mm²
- Cable length:: 170mm
- Mounting hole: 5mm



LIGHT	20A
HORN	20A
SPARE	20A
METER	10A
WIPER	15A
TURN	15A
RADIO	15A
FOG LAMP	15A



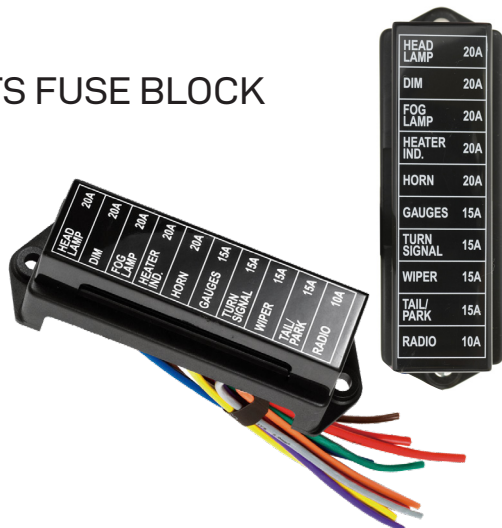
SINGLE PACK



LV5457

10 WAY PRE-WIRED ATS FUSE BLOCK WITH COVER

- Voltage: 6 - 32V
- Amperage: 15A/cct
- Housing material: Thermoplastic
- Terminal material: Tin plated brass
- Input cable size: 2.5mm²
- Output cable size: 1.5mm²
- Cable length:: 170mm
- Mounting hole: 5mm



HEAD LAMP	20A
DIM	20A
FOG LAMP	20A
HEATER IND.	20A
HORN	20A
GAUGES	15A
TURN SIGNAL	15A
WIPER	15A
TAIL PARK	15A
RADIO	10A



SINGLE PACK

