

PRESSURE SWITCHES

Toyota

A19-8845

Suits:
**RAV4 ACA20, ACA21
00-03**



Type: Trinary
LP: 1.96kg Off
MP: 15.2kg On
HP: 31.4kg, Off
Thread: Male M11 x 1.0



A19-8790

Suits:
**RAV4 SXA10, SXA11
94-00**



Type: Trinary
LP: 1.2kg Off
MP: 18.0kg On
HP: 32.0kg Off
Thread: Male 7/16"-20 UNF



A19-8845

Suits:
**Spacia SR40 98-02
Starlet EP91 96-99
Tarago TCR10, TCR11 90-00**



Type: Trinary
LP: 1.96kg Off
MP: 15.2kg On
HP: 31.4kg, Off
Thread: Male M11 x 1.0



A19-8848

Suits:
**Townace KR42
97-05**

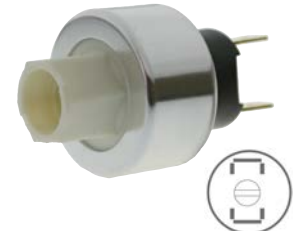


Type: Binary
LP: 2.0kg Off
HP: 32.0kg Off
Thread: Male M11 x 1.0



A19-8892

Suits:
**240, 740, 760, 940 83-93
Adjustable 0.5kg**



Type: LPCO
LP: 3.1kg On
LP: 1.7kg Off
Thread: Female 7/16"-20 UNF



A19-8893

Suits:
**240, 740, 760, 940 83-93
Adjustable 0.5kg**



Type: LPCO
LP: 3.1kg On
LP: 1.7kg Off
Thread: Female M12 x 1.5



A19-8885

Suits:
**Golf MK4
98-05**



Type: Transducer
Thread: Female 7/16"-20 UNF



A19-8847

Suits:
Golf MK3 94-98



Type: Trinary
LP: 1.5kg Off
MP: 16.0kg On
HP: 32.0kg Off
Thread: Female 7/16"-20 UNF



A19-8895

Suits:
**Passat B5 98-00
Polo 6N 94-01
Tiguan 5N 07-11**



Type: Transducer
Thread: Female M10 x 1.25



Volvo

Volkswagen

