

JAS Product Advice on Starters with identical appearance but different out of mesh measurements

Attention Fitter,

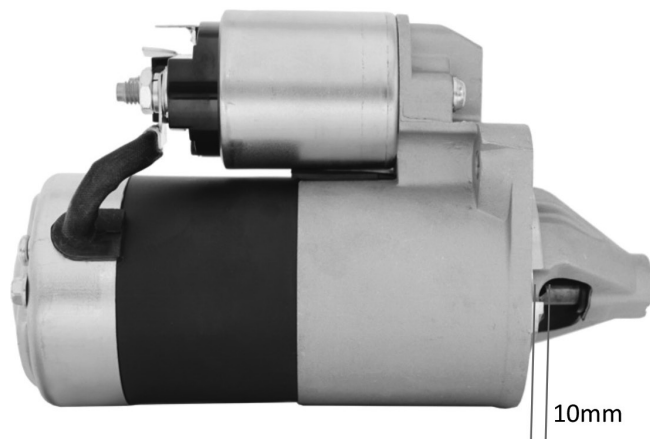
JAS have several starter motors for some applications that are identical in every respect except for out of mesh clearance, the starter in this packaging is one of those.

It is not possible despite every effort by JAS to identify every vehicle application where the out of mesh clearance is correct for the vehicle often due to differences in Auto/Manual fitment.

This is most common on Mitsubishi, Korean and Ford V8 applications.

Please confirm that the out of mesh clearance is correct before fitment. Starters returned with damage resulting from incorrect application will not be warrantied.

Please refer to picture below for an explanation of out of mesh clearance.



The most frequent time we see this issue is with SNJ095 and SNJ082 and the GQ versions. Looking at SNJ095 below the pinion at rest measurement distance is 10mm.



SNJ082 below has a pinion at rest measurement of 18mm



JAS Product Advice Starters Held in Mesh

Attention Fitter,

The Starter Motor in this packaging is one that has been identified to be commonly held in mesh by a faulty ignition switch or barrel and key assembly.

Please identify the cause of original starter failure and rectify before fitting this new starter.

Starters that have been held in mesh will not be warrantied as this is not caused by a manufacturing defect in the starter.

