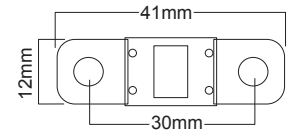


MIDI FUSE (ANS)

- Voltage: up to 58V
- Interrupting rating: 2000A @58V
- Slow blow
- Material: tin plated copper alloy & plastic
- Operating temperature: -40°C to 125°C
- Mounting hole: Ø6.4mm
- Complies with ISO 8820-5 / GB/T31465.5



PACK OF 1/10



PRODUCT INFORMATION

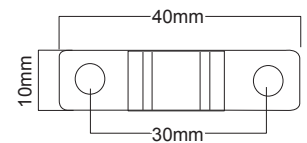
Single Pack	10 Pack	Amperage	Single Pack	10 Pack	Amperage
LV5349	LV5349/10	20A	LV5355	LV5355/10	80A
LV5350	LV5350/10	30A	LV5356	LV5356/10	100A
LV5351	LV5351/10	40A	LV5357	LV5357/10	125A
LV5352	LV5352/10	50A	LV5358	LV5358/10	150A
LV5353	LV5353/10	60A	LV5359	LV5359/10	175A
LV5354	LV5354/10	70A	LV5369	LV5369/10	200A

MIDI FUSE (AMI)

- Voltage: up to 32V
- Interrupting rating: 2000A @32V
- Slow blow
- Material: Tin plated copper & PA66-GF25
- Operating temperature: -40°C to 125°C
- Mounting hole: Ø5.5mm
- Complies with standard UL 248-1 as a special purpose fuses in UL file E71611 (40-100A) & directive 2011/65/EU



SINGLE PACK



PRODUCT INFORMATION

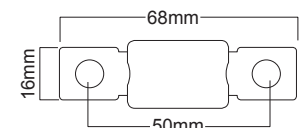
Single Pack	Amperage	Single Pack	Amperage
LV5320	30A	LV5327	100A
LV5321	40A	LV5345	125A
LV5322	50A	LV5346	150A
LV5323	60A	LV5347	175A
LV5324	70A	LV5348	200A
LV5325	80A		

MEGA FUSE (ANM)

- Voltage: up to 32/80V
- Interrupting rating: 2000A @32V
- Interrupting rating: 2000A @80V (300A - 500A)
- Slow blow
- Material: Tin plated copper alloy/Bakerlite (40A -250A)
- Material: Tin plated copper alloy/ceramic (300A -500A)
- Operating temperature: -40°C to 125°C
- Mounting hole: Ø8.5mm
- Complies with ISO 8820-5 / GB/T31465.5



SINGLE PACK



PRODUCT INFORMATION

Single Pack	Amperage	Single Pack	Amperage	Single Pack	Amperage
LV5390	40A	LV5361	125A	LV5367	300A
LV5391	50A	LV5362	150A	LV5368	350A
LV5392	60A	LV5363	175A	LV5342	400A
LV5393	70A	LV5364	200A	LV5343	450A
LV5394	80A	LV5365	225A	LV5344	500A
LV5360	100A	LV5366	250A		