

## Product Release

# HIGH POWER 80W LED WORK LIGHT



**WELDEX CORPORATION**



### FEATURES

- Off-road racing, ATV/UTV, truck, mining, agricultural, heavy-duty equipment, boat, construction, etc.
- 200G shock resistance & 60G vibration rating
- Auto electronic thermal management system
- ECE R10 certification
- CISPR25 class 5 rating
- Die cast for superior heat dissipation
- Adjustable trunnion mounting bracket
- Vertical fins maximize heat dissipation
- Low power consumption
- TIR lens (Polycarbonate)
- Includes toggle power switch

### SPECIFICATION

|                          |                 |
|--------------------------|-----------------|
| <b>Wattage</b>           | 80W             |
| <b>Input voltage</b>     | DC 9-36V        |
| <b>Current draw</b>      | 6.7A (@12V)     |
| <b>Color temperature</b> | 3000/5000/5700K |
| <b>Weight</b>            | 2.1kg           |
| <b>Luminous flux</b>     | 6040lm          |
| <b>Housing color</b>     | Black           |
| <b>LED lifetime</b>      | 50,000 Hour     |
| <b>IP rating</b>         | IP69K           |
| <b>Vibration rating</b>  | 60G             |

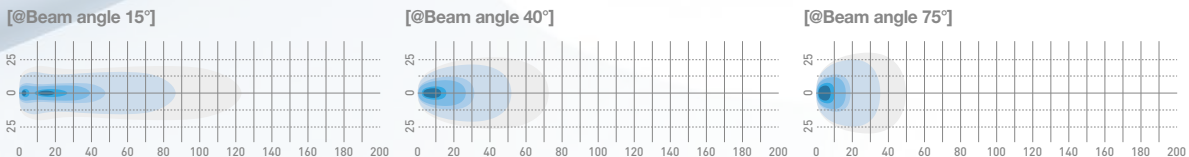


It could be adjusted before fitment using the plate and rotation angles on the specially designed bracket

### PRODUCT INFORMATION

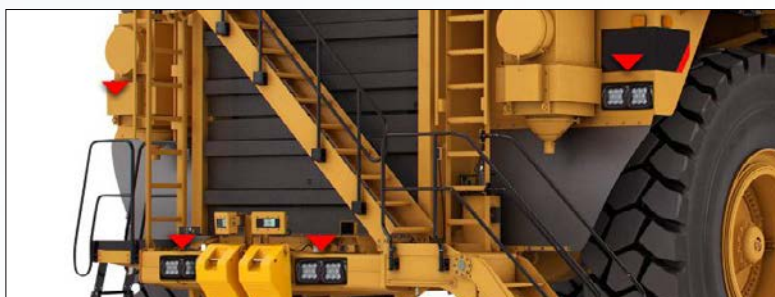
| Part No.         | Beam Angle | Barcode       |
|------------------|------------|---------------|
| LVW-8S80DT15-NPH | 15°        | 9342828208987 |
| LVW-8S80DT25-NPH | 25°        | 9342828205634 |
| LVW-8S80DT40-NPH | 40°        | 9342828205658 |
| LVW-8S80DT75-NPH | 75°        | 9342828205641 |

### DRIVING BEAM PATTERN (@Beam angle 15° / 25° / 40° / 75°)



Candela output - maximum intensity

I = 380000cd



### DIMENSIONS

(unit : mm)

