

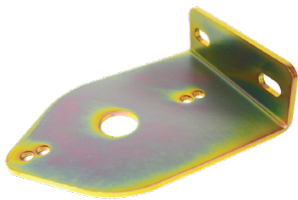
BRACKETS / LOCK OUT LEVER KITS

SINGLE PACK

**LV5000**  
MOUNTING BRACKET



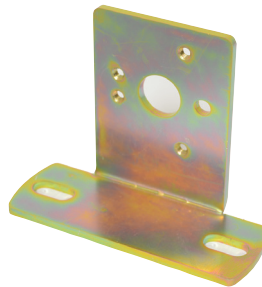
- Stainless steel zinc plated
- 4mm thickness
- Contour style with 4 mounting holes to accommodate either single pole or double pole switch
- Suits: Bosch double pole switch: **0341003004**,  
Single pole switch: **LV4951**,  
Double pole switch: **LV4952**



**LV5001**  
MOUNTING BRACKET



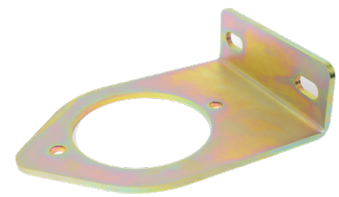
- Stainless steel zinc plated
- 4mm thickness
- Suits Cole Hersee switches with 3/4" stem



**LV5003**  
MOUNTING BRACKET



- Stainless steel zinc plated
- 4mm thickness
- 100mm cnt to cnt
- Suits Cole Hersee 880175 switch variants
- Right angle & contour style



LOCK OUT LEVER KITS



- Locks switch into OFF position with padlock
- Suits Cole Hersee battery master switches with 3/4" stem
- Accepts padlock shackle Ø5/16 (7.9mm)
- Kit includes a steel switch lock out bracket & die-cast lever



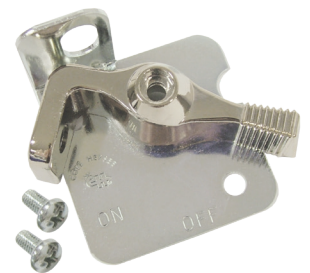
PRODUCT INFORMATION

Part No.	Colour
LV5014R	Red
LV5014Y	Yellow

LOCK OUT LEVER KITS



- Locks switch into OFF position with padlock
- Suits Cole Hersee battery master switches with 3/4" stem
- Accepts padlock shackle Ø5/16 (7.9mm)
- Accepted by many lock-out/tag-out safety regulations
- Padlockable lever & flange plate
- Dimensions: 48 (H) x 31 (D) x 48 (W)mm



PRODUCT INFORMATION

Part No.	Colour
24505-01B	Chrome
24505-01R	Red
24505-01Y	Yellow

LOCK OUT BRACKETS



- Locks switch into OFF position with padlock
- These locking brackets are designed to fit switches without the removal of the switch & cables
- Stainless steel hinged style, suits Cole Hersee switches with 3/4" stem
- Dimensions: 70 (L) x 55 (W) x 45 (H)mm



PRODUCT INFORMATION

Part No.	Sticker	Colour
LV5002R	Battery Isolator	Red
LV5002Y	Starter Isolator	Yellow

LOCK OUT BRACKETS



- Locks switch into OFF position with padlock
- Material: 2mm stainless steel
- Finish: powder coated
- Hinged style, suits Cole Hersee switches with 3/4" stem
- Dimensions: 70 (L) x 55 (W) x 45 (H)mm



PRODUCT INFORMATION

Part No.	Colour
LS11004-01	Red
LS11004-02	Yellow