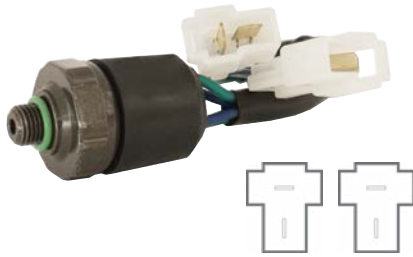


# PRESSURE SWITCHES

Nissan

## A19-8851

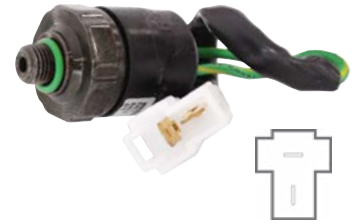
Suits:  
**Patrol GQ, GU, Y61  
88-02**



Type: Trinary  
LP: 2.0kg Off  
MP: 17.0kg On  
HP: 27.0kg Off  
Thread: Male 3/8"-24 UNF

## A19-8788

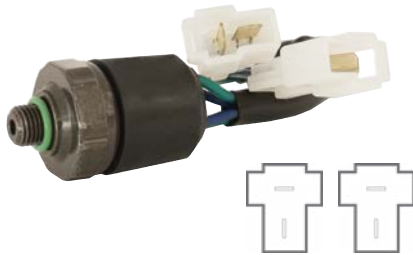
Suits:  
**Pulsar N12  
81-87**



Type: Binary  
LP: 2.0kg Off  
HP: 3.05kg Off  
Thread: Male M10 x 1.25

## A19-8851

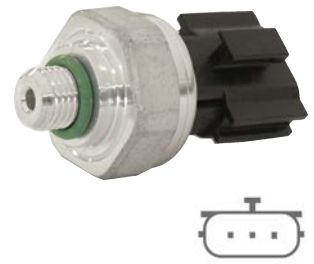
Suits:  
**Pintara R31 86-90  
Skyline R31 86-90  
Skyline R30 82-85**



Type: Trinary  
LP: 2.0kg Off  
MP: 17.0kg On  
HP: 27.0kg Off  
Thread: Male 3/8"-24 UNF

## A19-8856

Suits:  
**X-Trail T30, T31  
01-15**



Type: Transducer  
Thread: Male 3/8"-24 UNF

## A19-8848

Suits:  
**Persona 96-04  
Satria 97-07  
Wira 95-96**



Type: Binary  
LP: 2.0kg Off  
HP: 32.0kg Off  
Thread: Male M11 x 1.0

## A19-8895

Suits:  
**Fabia 5J 10-15  
Octavia 1Z 10-13  
Roomster 5J 10-15  
Superb 3T 10-16**



Type: Transducer  
Thread: Female M10 x 1.25

## A19-8808

Suits:  
**AT, LT  
98-09**



Type: LPCO  
LP: 3.1kg On  
LP: 1.7kg Off  
Thread: Female M12 x 1.25

Proton

Skoda

Sterling