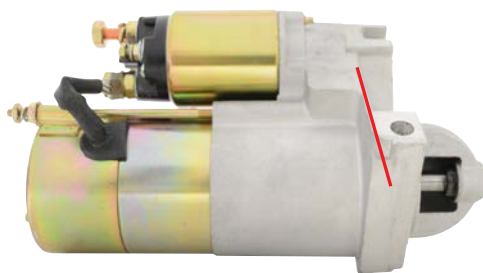


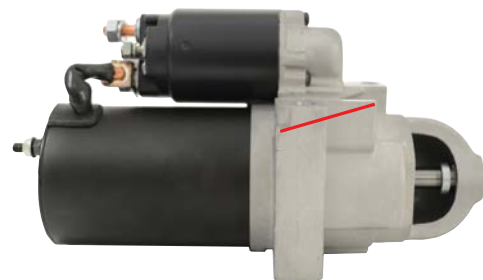
SND047 Chev Multifit Starter

There are 2 Basic types of fitment of Chev Starters, straight mount and offset mount. In later starters these are either SND003 or SND004.

SND003 Straight Mount



SND004 Offset Mount

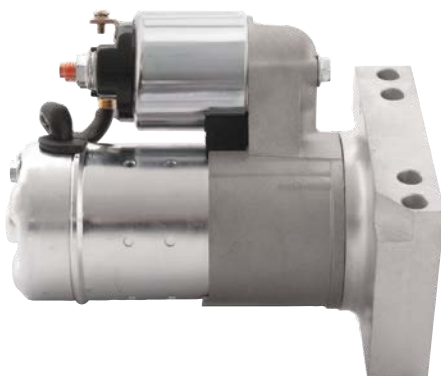


SND047 is a good option for both of these starters, it has dual mounting bolt positions that allows it to fit both straight and offset mount applications and an indexable front housing to allow it to fitted to suit engines with different exhausts. In addition to the dual mounting aspect, the SND047 does not have an open nose cone that will minimise water picked being up by the flywheel in the bilge of a boat and “thrown” into the nose of the starter damaging the internals so it’s a good option for speedboats.

“A starter is not a water pump!”

There is also a Chrome Version SND047C for the Hot Rod / Car Enthusiast!

SND047



SND047C Chrome

