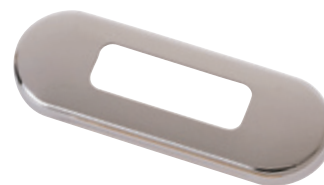


ACCESSORIES

■ Wide Rim Cover - Polished Stainless Steel	95968500
■ Wide Rim Cover - Gold-plated Stainless Steel	95968502
■ Wide Rim Cover - Satin Stainless Steel	95968506

Decorative Stainless-steel Cover to suit all rectangular Wide Rim LED Courtesy Lamps offering attractive styling and superior protection.



Matrix Wide Rim Seal	9GD959155507
----------------------	--------------

Spare seal to suit all Wide Rim Matrix Series LED Signal and Courtesy Lamps. One seal required per lamp. Suits 2641-24V, 2641-24V, 2641HB-12V, 2641HB-24V.



Narrow Rim Seal	9GD959515127
Wide Rim Seal	9GD959517007

Spare seals to suit all rectangular LED Courtesy Lamps. One seal required per lamp.



Curved Narrow Rim Mounting Gasket	9GD959515207
-----------------------------------	--------------

Curved seal for flush mounting Narrow Rim LED Courtesy and Marker Lamps on curved surfaces. Designed to suit 64mm (2.5") pipes. Flexibility allows gasket to suit a variety of curve radii.



■ Plastic Screw Cap - Clear	9HD959182007
■ Plastic Screw Cap - Amber	9HD959182017
■ Plastic Screw Cap - Red	9HD959182027
■ Plastic Screw Cap - Black suits Designline & Jumbo inserts	9HD959182037

Spare Plastic Screw Caps to suit all rectangular LED courtesy lamps. Two screw caps required per lamp.

