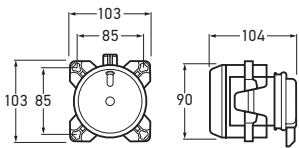


FF H7 Main Beam Headlamp Assembly with Position Lamp - 12V <small>ADR</small>	1030-12V
FF H7 Main Beam Headlamp Assembly with Position Lamp - 24V <small>ADR</small>	1030-24V

Compact FF H7 Main (high) Beam Headlamp Assembly with 90mm light aperture and inbuilt position lamp. Supplied with protective rubber sealing cap and position lamp connector set.

Voltage	12V Globes included	1030-12V
	24V Globes included	1030-24V
Globe to suit	Headlamp	12V H7 (CA1255) 24V H7 (CA2470)
	Front Position	12V T4W (HL124) 24V T4W (HL244)
Spare Parts	9.1029.07	Rubber Protective Cap ①
	9.1029.08	Position Lamp Connector Set ②
	9.1029.09	Supporting Frame ③



FF H7 Main Beam Headlamp Assembly - 24V <small>ADR</small>	1031-24V
--	----------

Compact FF H7 Main Beam Headlamp Assembly with 90mm light aperture. Supplied with protective rubber sealing cap.

Voltage	24V Globe included	
Globe to suit	12V H7 (CA1255)	
	24V H7 (CA2470)	
Spare Parts	9.1029.07	Rubber Protective Cap ①
	9.1029.09	Supporting Frame ②

