

# UNIVERSAL BINARY PRESSURE SWITCHES

## A19-8787 Spade Connectors



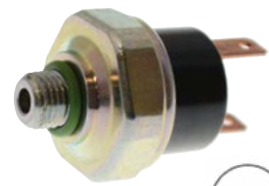
Type: Binary  
LP: 1.8kg Off  
HP: 27.0kg Off  
Thread: Male 3/8"-24 UNF



## A19-8877 Spade Connectors



Type: Binary  
LP: 2.0kg Off  
HP: 22.5kg Off  
Thread: Male 3/8"-24 UNF



## A19-8879 With Loom



Type: Binary  
LP: 2.0kg Off  
HP: 22.5kg Off  
Thread: Male 3/8"-24 UNF



## A19-8801 Spade Connectors



Type: Binary  
LP: 2.0kg Off  
HP: 22.5kg Off  
Thread: Female 7/16"-20 UNF



## A19-8873 With Loom



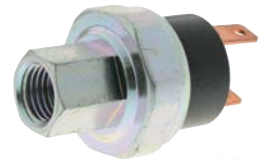
Type: Binary  
LP: 2.0kg Off  
HP: 22.5kg Off  
Thread: Female 7/16"-20 UNF



## A19-8875 Spade Connectors



Type: Binary  
LP: 2.0kg Off  
HP: 22.5kg Off  
Thread: Female 7/16"-20 UNF



## A19-8880 With Loom



Type: Binary  
LP: 2.0kg Off  
HP: 22.5kg Off  
Thread: Female 7/16"-20 UNF



## A19-8805 With Loom



Type: Binary  
LP: 2.0kg Off  
HP: 26.5kg Off  
Thread: Female 7/16"-20 UNF



## A19-8872 Oval Plug



Type: Binary  
LP: 2.0kg Off  
HP: 30.0kg Off  
Thread: Male M11 x 1.0



## A19-8781 Spade Connectors



Type: Binary  
LP: 2.0kg Off  
HP: 32.0kg Off  
Thread: Male 3/8"-24 UNF

