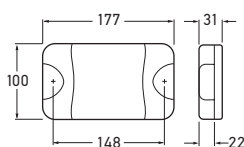


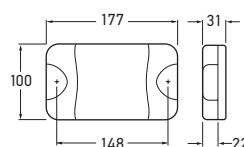
## LED REAR DIRECTION INDICATORS



<b>2151</b>	DuraLed® Rear Direction Indicator - Amber	ADR
<b>2151BL</b>	DuraLed® Rear Direction Indicator - Amber	ADR
<b>2151BULK</b>	DuraLed® Rear Direction Indicator (Pack of 4) - Amber	ADR
<b>2152BULK</b>	PC DuraLed® Rear Direction Indicator (Pack of 4) - Amber	ADR

LED Rear Direction Indicator with acrylic lens for enhanced chemical resistance. Slimline design for increased protection against damage. 2152BULK features polycarbonate lens for superior impact resistance.

<b>Voltage</b>	Multivolt™ (9-33V DC)
<b>Wattage</b>	6W
<b>Mounting</b>	Surface Mount (screw caps and mounting bushes included).
<b>Lead Length</b>	2.5 metres.
<b>Protection</b>	Reverse Polarity and 5.0kW Transient Voltage Suppressor (TVS). Fully sealed against dust and moisture to IP6K6 and IP6K7.
<b>Spare Parts</b>	<div> <b>9.2330.08</b> Screw cap and boss kit  </div> <div> <b>9.2330.15</b> ■ Black screw cap (pack of 4)         </div> <div> <b>9.2330.17</b> Screw boss (pack of 4)         </div>



<b>2151-H</b>	DuraLed® Wide Angle Rear Direction Indicator - Horizontal Mount	ADR
<b>2151-HBL</b>	DuraLed® Wide Angle Rear Direction Indicator - Vertical Mount	ADR
<b>2151-V</b>	DuraLed® Wide Angle Rear Direction Indicator - Vertical Mount	ADR
<b>2151-HCS</b>	DuraLed® HCS Rear Direction Indicator - Horizontal Mount	ADR
<b>2151-VCS</b>	DuraLed® HCS Rear Direction Indicator - Vertical Mount	ADR

LED Rear Direction Indicator featuring acrylic lens with unique UWVO (Ultra Wide Visibility Optics) for significantly improved side visibility. Slimline design for increased protection against damage. Fully sealed against dust and moisture. 2151-HCS and 2151-VCS features HELLA patented control technology HCS (HELLA Compatibility Solution) ensuring seamless communication with LED-compatible flasher units. Refer page 395.

<b>Voltage</b>	Multivolt™ (9-33V DC)
<b>Wattage</b>	6W + HCS Trigger Pulse
<b>Mounting</b>	Surface Mount (screw caps and mounting bushes included). 2151-H/HCS horizontal mounting. 2151-V/VCS vertical mounting.
<b>Lead Length</b>	2.5 metres
<b>Protection</b>	Reverse Polarity and 5.0kW Transient Voltage Suppressor (TVS). Fully sealed against dust and moisture to IP6K6 and IP6K7.
<b>Note</b>	Horizontal mount version shown (2151-HCS).
<b>Spare Parts</b>	<div> <b>9.2330.08</b> Screw cap and boss kit  </div> <div> <b>9.2330.15</b> ■ Black screw cap (pack of 4)         </div> <div> <b>9.2330.17</b> Screw boss (pack of 4)         </div>