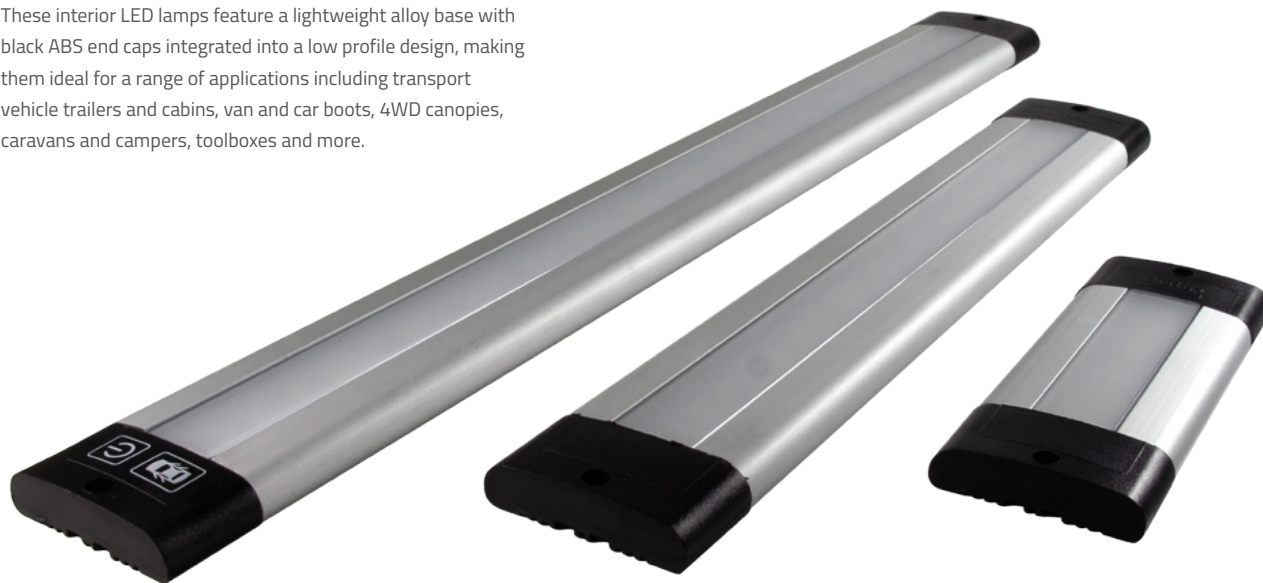


## INTERIOR LED LAMPS

### Low Profile Interior LED Lamps with Polycarbonate Lens and Alloy Base

These interior LED lamps feature a lightweight alloy base with black ABS end caps integrated into a low profile design, making them ideal for a range of applications including transport vehicle trailers and cabins, van and car boots, 4WD canopies, caravans and campers, toolboxes and more.



#### Design Features

- Low profile design, only 12mm high
- Polycarbonate lens with opaque finish
- Lightweight alloy base with black ABS end caps
- Available in lengths of 136mm, 300mm or 450mm
- Optional Door Mode and Power touch switches

#### Specifications

- Multivoltage 10–24V
- Height 12mm x Depth 50mm
- 10 LED Current draw: 0.41A @ 12V; 0.23A @ 24V
- 22 LED Current draw: 0.73A @ 12V; 0.38A @ 24V
- 32 LED Current draw: 1.17A @ 12V; 0.62A @ 24V
- Complies to ECE regulation 10.04 EMC
- Lamps are rated to IP65

#### Part Numbers

<b>E78-INL136</b>	10 LED, 360 Lumen, LED Interior Lamp, Length 136mm
<b>E78-INL136SW</b>	10 LED, 360 Lumen, LED Interior Lamp with touch switches, Length 136mm
<b>E78-INL300</b>	22 LED, 770 Lumen, LED Interior Lamp Length 300mm
<b>E78-INL300SW</b>	22 LED, 770 Lumen, LED Interior Lamp with touch switches, Length 300mm
<b>E78-INL450</b>	32 LED, 1130 Lumen, LED Interior Lamp, Length 450mm
<b>E78-INL450SW</b>	32 LED, 1130 Lumen, LED Interior Lamp with touch switches, Length 450mm

