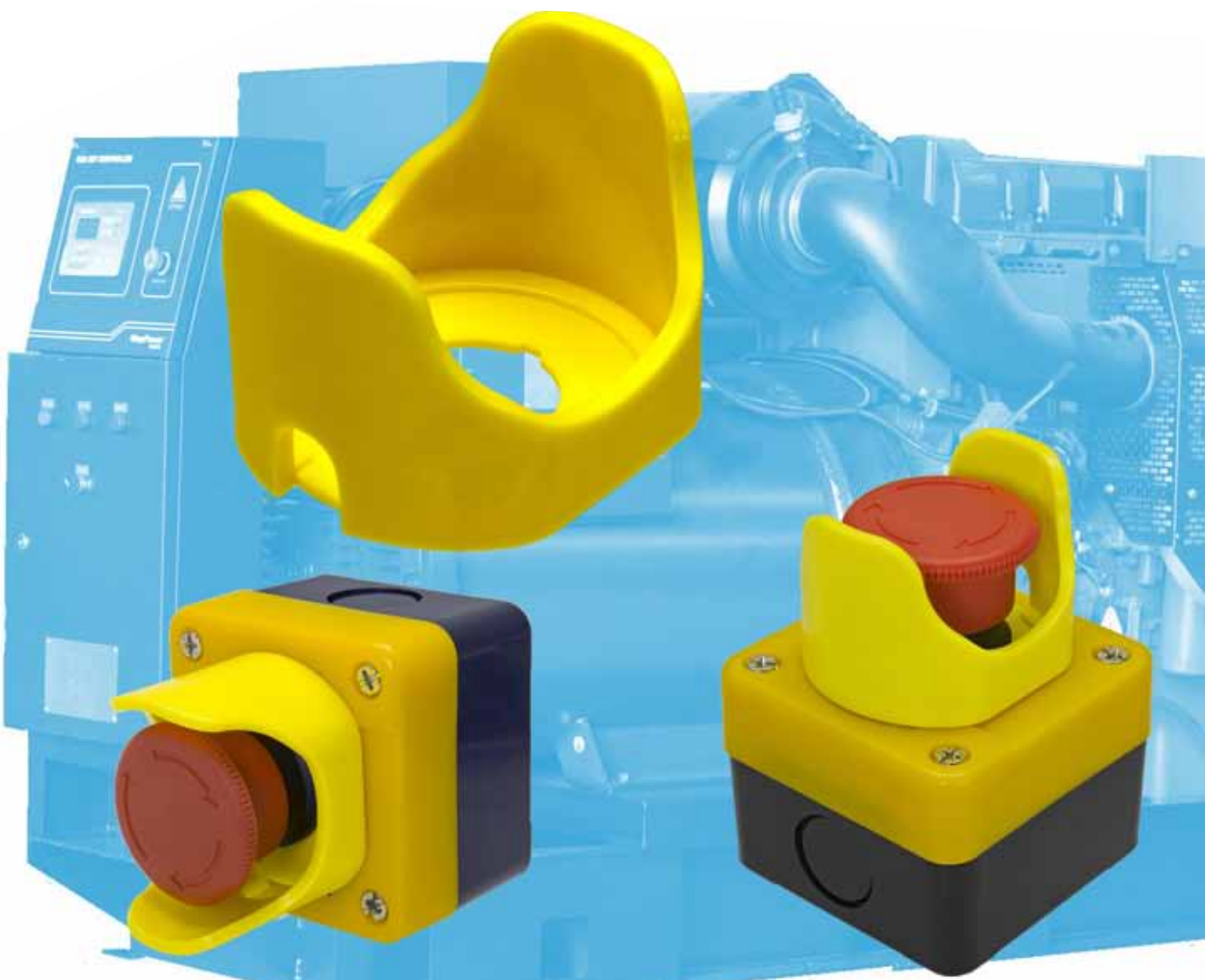


## New Product Release February 2015

Part no: E52-0535



**E-Stop not included - for illustrative purposes only**

Our deflector shroud is great for applications where a switch can be struck by passing or falling objects such as branches or prone to accidental operation due to its proximity to such hazards.

- ▶ Can be used with any standard shape 22mm actuator (selector, pushbutton) up to 40mm in diameter
- ▶ Can be used on E-Stop enclosures or control panels alike
- ▶ Water drain port for horizontal/sloped mounting applications
- ▶ For horizontal & vertical use ▶ Optional 'EMERGENCY STOP' sticker (ZLP6) to suit available