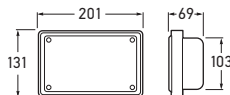


REAR DIRECTION INDICATORS

**2143****Jumbo Rear Direction Indicator - 12V**

ADR

Single globe holder. Suitable for insulated earth circuits.

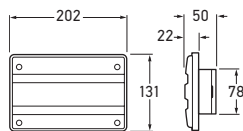
Voltage 12V Globe included.

Mounting Flush Mount (171 x 103mm opening).

Additional Function Front End Outline Lamp when used with 12V (G125) or 24V (G245) 5W bayonet base globes.

Globes to suit 12V (R1221) Bayonet base
24V (R2421) Bayonet base

Spare Parts 9.2143.01 Lens
9.2043.05 Lens gasket
9.2319.09 Housing assembly (no globe holder)

**2145****Designline Rear Direction Indicator**

ADR

2145PC**Designline PC Lens Rear Direction Indicator**

ADR

Single globe holder. 2145PC features polycarbonate lens for high-impact or high-operating-temperature applications. Suitable for insulated earth circuits.

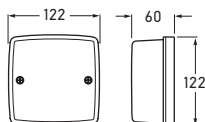
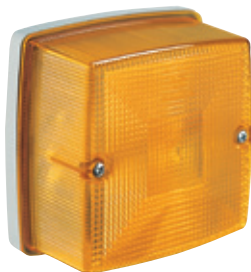
Voltage Globe to be ordered separately.

Mounting Flush Mount (78 x 145mm opening).

Additional Function Front End Outline Lamp when used with 12V (G125) or 24V (G245) 5W bayonet base globes.

Globes to suit 12V (R1221) Bayonet base
24V (R2421) Bayonet base

Spare Parts 9.2144.01 Lens
9.2145PC.01 PC Lens
9.2043.05 Base gasket and lens gasket
9.2041.08 Single contact globe holder, 12V

**2134****Rear Direction Indicator**

ADR

Suitable for insulated earth circuits.

Voltage Globe to be ordered separately.

Mounting Surface Mount

Additional Function Front End Outline Lamp when used with 12V (G125) or 24V (G245) 5W bayonet base globes.

Globes to suit 12V (R1221) Bayonet base
24V (R2421) Bayonet base

Spare Part 9.2143.01 Lens