

Connectors

E61-3032

Flasher Connector

- Flasher Connector
- Accepts Standard 3 Pin Flasher Units
- Molded Plastic Connector with 200mm Wire Leads



E59-2520

EFI Connector

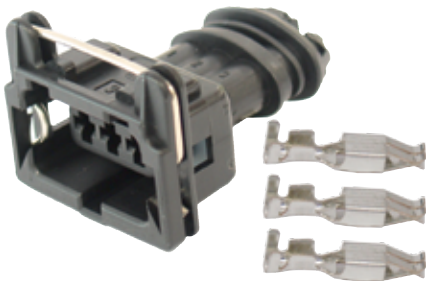
- EFI 2 Pin Kit
- Includes Terminals & Protective Rubber Boot



E59-2521

EFI Connector

- EFI 3 Pin Kit
- Includes Terminals



E59-2522

EFI Connector

- EFI 4 Pin Kit
- Includes Terminals & Protective Rubber Boot



E59-2530

EFI Connector

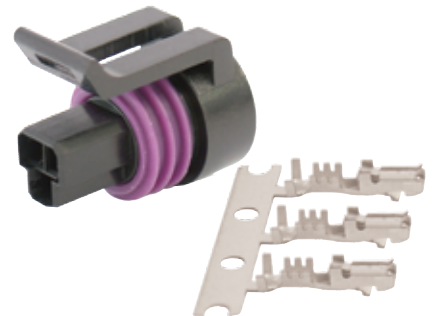
- EFI 2 Pin Connector
- Suits cable cross section 0.75mm² to 1.00mm²
- Suits cable diameter 2.03mm to 2.40mm
- Suits GM applications



E59-2525

Throttle Position Plug

- Throttle Position Plug kit
- Suits GM / Toyota



Terminal Connector Strips



Part No.	Description	Qty
E59-2050	Terminal Connector Strip 1.5mm ²	10
E59-2051	Terminal Connector Strip 2.5mm ²	10
E59-2052	Terminal Connector Strip 5.5mm ²	10

E59-4000

Junction Box

- 8 Way Rubber Bodied Junction Box
- Screw Terminal Connection
- Dimensions: 130 x 110 x 90mm

