

DuraLed® M High Intensity Warning Beacon



DuraLed® M MultiFlash are versatile high intensity LED optical warning beacon lights designed for heavy duty installation on mining equipment and service vehicles in applications where roof-mounted warning beacons may not be desirable or sufficient.

Hella MultiFlash LED beacons offer multiple, user-selectable flash patterns to suit a large variety of applications. The desired operational mode can be selected by simply changing the settings via the power cable. No external control systems are required.

DuraLed M beacons are extremely robust, fully sealed truly “fit and forget” products, tolerant to severe vibration levels and very compact in design. A high impact and shock resistant clear Xylex lens is permanently bonded to a rugged, UV damage-resistant composite base for increased mechanical strength and maximum durability. Hella engineered DuraLed M lamps to ensure a very long service life and no lighting loss due to internal dirt build-up; they are also very well suited to wet and corrosive environments and tolerate short-term immersion. (See technical section for more Xylex information.)

Unlike Xenon flash strobes, DuraLed M LED beacons are maintenance free and extremely power efficient which greatly reduces both operating temperature and demand on the vehicle's electrical system. Maximum service life and light output of the high intensity LEDs is ensured through using internal heat sinks. The integral Multivolt and MultiFlash control module also protects the DuraLed M against damage from overheat, reverse polarity and short circuits. (See technical section for more Multivolt information.)

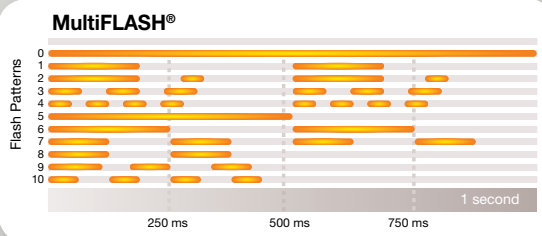
Safe and reliable electrical connection is facilitated via a highly flexible double insulated cable sealed into the base, terminated as a short length with a DT connector or 2m cable with tinned wire ends. Other connector options can be supplied as special orders.

DuraLed M MultiFlash beacons are equipped with advanced clear micro optic lenses to prevent the hazardous occurrence of “ghost” signals by internally reflected light from other sources. Five LED signal colours are available (amber, red, blue, green and white) to suit all signal applications. The MultiFlash function is not available on the white variants.

The smooth ergonomic design and very low profile (under 35mm) allows DuraLed M units to be installed on almost any surface. Specially designed nylon bushes prevent stress fractures developing in the base, by distributing the fastening bolt load over a large surface of the base without transferring any torque. Tamper proof screw covers securely lock the product into place and simplify cleaning by eliminating dirt collecting cavities.

Product features

- Available in amber, red, blue, green and white
- High efficiency, long life LED light
- User selectable flash patterns
- IP6K7K
- Impact resistant smooth Xylex lens
- UL94 flame retardant rated external parts
- Clear precision micro optics
- Spares interchangeable with Hella DuraLed range
- Multivolt™ 9-33V DC
- Low power < 10W
- Fully sealed “fit and forget” design
- 0.5kg mass
- 200G shock impulse resistant
- Overheat, reverse polarity and short circuit protection
- Spares interchangeable with Hella DuraLed range
- Double insulated supply cable with DT plug or bare wire
- Tested over a



Description	Part No.
DuraLed® M TripleFLASH	
Green narrow	HM95903780
Blue narrow	HM95903760
Red narrow	HM95903700
Amber narrow	HM95903710
DuraLed® M TripleFLASH, DT Plug	
Green narrow	HM95903780D
Blue narrow	HM95903760D
Red narrow	HM95903700D
Amber narrow	HM95903710D
DuraLed® M White	
Wide	HM95906052
Wide, DT Plug	HM95906052D

Multivolt

MultiFlash

LED

DT & L BARE WIRE

0.5Kg

IP6K7

200G

9 to 33V

9W

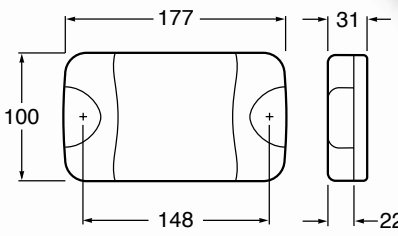
Spare Parts

Part No.	Description
9.HMDLM001	Cover Kit Yellow



Optic appears clear until illuminated in all lamps

DuraLed® M



Amber Illuminated Blue Illuminated Red Illuminated White Illuminated Green Illuminated

