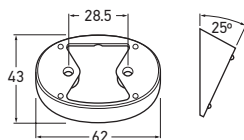


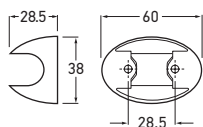
LED SIGNAL & MARKER LAMP ACCESSORIES

**9.2053.07****DuraLed® Angle Mounting Spacer**

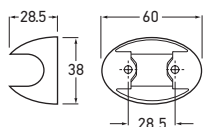
25° Angle Mounting Bracket to facilitate the vertical alignment and installation of DuraLed® Series Signal and Marker Lamps on angled mounting surfaces.

Suits

Part No. 2026, 2051, 2053, 2054, 2307, 95963025, 95963046 and 95963055.

NEW**9.2053.08****DuraLed® Nylon Housing - Black****9.2053.08BULK****DuraLed® Nylon Housing - Black (Pack of 4)**

Extremely durable Nylon Housing to suit all surface-mount DuraLed® Series Signal and Marker Lamps. Designed to allow for the lamp insert to pass through from the rear, which enables retrofitting of installed lamps without having to reinstall the lamp wiring.

**9.2053.10BULK****■ DuraLed® Housing - Red (Pack of 4)****9.2053.14BULK****■ DuraLed® Housing - Yellow (Pack of 4)****9.2053.15BULK****■ DuraLed® Housing - Amber (Pack of 4)**

Extremely durable ASA Housing to suit all surface-mount DuraLed® Series Signal and Marker Lamps. Designed to allow for the lamp insert to pass through from the rear, which enables retrofitting of installed lamps without having to reinstall the lamp wiring.