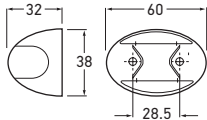


LED MARKER LAMPS

NEW



2053GMD

DuraLed® Nylon Side Marker - Red/Amber Illuminated

ADR

2053GMD BULK

DuraLed® Nylon Side Marker -
Red/Amber Illuminated (Pack of 4)

ADR

New Generation LED Side Marker featuring nylon housing and ultra-durable Grilamid® nylon lens for extreme impact, UV, chemical and stress resistance. **Optic appears clear until illuminated.** Suitable for extreme conditions such as logging or quarrying.

Voltage Multivolt™ (8-28V DC)

Wattage 12V DC 0.4W
24V DC 0.8W

Mounting Surface Mount

Lead Length 0.5 metre (display pack)
2.5 metre (bulk pack)

Protection Reverse Polarity Protected. Fully sealed against dust and moisture to IP6K6 and IP6K7.

Accessories 9.2053.07 25° Angle mounting spacer ①

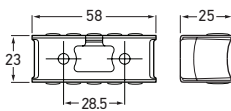
Spare Parts 9.2053.08 ■ Black nylon housing ②
9.2053.08 BULK ■ Black nylon housing (pack of 4) ②

NEW



Polished

Satin



2058

HD LED Side Marker - Red/Amber
Illuminated, Satin S/S Housing

ADR

2058 BULK

HD LED Side Marker - Red/Amber
Illuminated, Satin S/S Housing (Pack of 4)

ADR

2058P

HD LED Side Marker - Red/Amber
Illuminated, Polished S/S Housing

ADR

2058P BULK

HD LED Side Marker - Red/Amber
Illuminated, Polished S/S Housing (Pack of 4)

ADR

Heavy-duty LED Side Marker featuring stainless-steel housing and ultra-durable Grilamid® nylon lens for extreme impact, UV, chemical and stress resistance.

Voltage Multivolt™ (8-28V DC)

Wattage 12V DC 0.4W
24V DC 0.8W

Lead Length 0.5 metre (display pack)
2.5 metre (bulk pack)

Protection Reverse Polarity Protected. Fully sealed against dust and moisture to IP6K6 and IP6K7.