

## EFI CONNECTORS

SINGLE PACK

### LV2792

#### 2 PIN EFI/RE60 CONNECTOR

- Nylon housing
- Rubber boot
- Operating temperature: -30°C to 110°C
- No. of cavities: 2
- Current rating: up to 24A
- Suits RE60 regulator
- Reference: E59-2520



### 1287013003

#### 2 PIN EFI/RE60 CONNECTOR

- Nylon housing
- Rubber boot
- Operating temperature: -30°C to 110°C
- No. of cavities: 3
- Current rating: up to 24A
- Suits RE60 regulator



### LV2793

#### 3 PIN EFI CONNECTOR

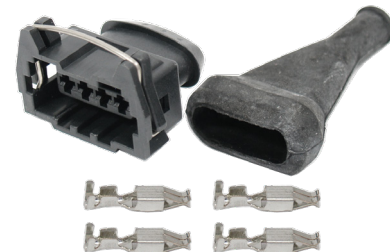
- Nylon housing
- Rubber boot
- Operating temperature: -30°C to 110°C
- No. of cavities: 3
- Current rating: up to 24A
- Reference: E59-2521



### LV2794

#### 4 PIN CRANK ANGLE SENSOR CONNECTOR

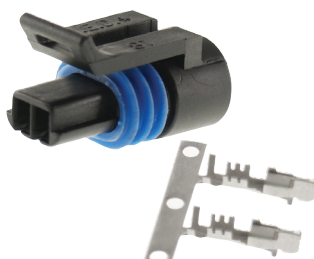
- Nylon housing
- Rubber boot
- Operating temperature: -30°C to 110°C
- No. of cavities: 4
- Current rating: up to 24A
- Reference: E59-2522



### LV2795

#### 2 PIN EFI CONNECTOR

- Suits GM Applications
- Nylon housing
- Operating temperature: -30°C to 110°C
- No. of cavities: 2
- Current rating: up to 10A
- Reference: E59-2530



### LV2796

#### 3 PIN EFI CONNECTOR

- Suits GM/Toyota Applications
- Nylon housing
- Operating temperature: -30°C to 110°C
- No. of cavities: 3
- Current rating: up to 10A
- Reference: E59-2525

