

BCDCMB- XXX Mounting Brackets

- REDUCES BCDC CHARGER FITMENT TIME
- FOR VEHICLE ENGINE BAY INSTALLATION
- AUSTRALIAN MADE AND DESIGNED
- CONSTRUCTED FROM 304 STAINLESS STEEL
- INSTALLATION INSTRUCTIONS AND FASTNERS INCLUDED

**Launching
September
2019!**



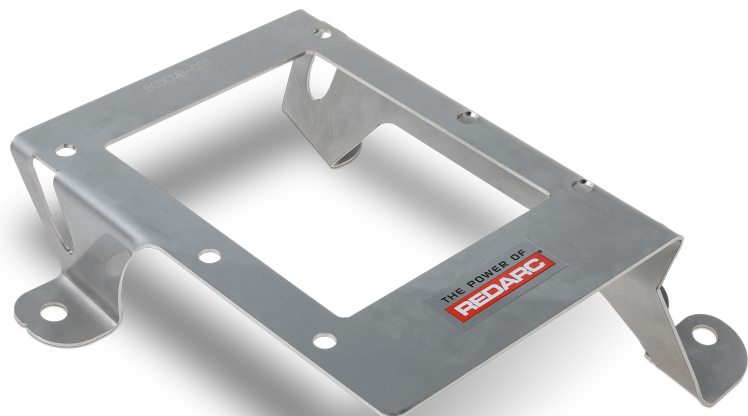
NEW PRODUCT RELEASE BCDC **Mounting Brackets**

REDARC is releasing a range of BCDC Mounting Brackets to aid in the engine bay installation of BCDC In-Vehicle Chargers.

Each of the brackets are designed to be used with all REDARC BCDC variants, and ship complete with instructions and fasteners to complete the installation process. Each bracket is vehicle specific, ensuring that the bracket size and mounting location is tailored for secure fitment within the engine bay.

In total, 6 BCDC variants will be released:

Part Number	Suitable for...	Barcode
BCDCMB-001	Toyota LandCruiser 200 (11/2008-on)	9338628005710
BCDCMB-002	Toyota LandCruiser 70 (03/2007-on)	9338628005727
BCDCMB-003	Toyota LandCruiser Prado 150 (10/2009-on)	9338628005734
BCDCMB-004	Toyota HiLux (03/2005-9/2015)	9338628005741
BCDCMB-005	Toyota HiLux (10/2015-on)	9338628005758
BCDCMB-006	Isuzu D-MAX (06/2012-on) & Holden Colorado RG (06/2012-on)	9338628005765



REDARC Electronics
Phone: (08) 8322 4848
Fax: (08) 8387 2889